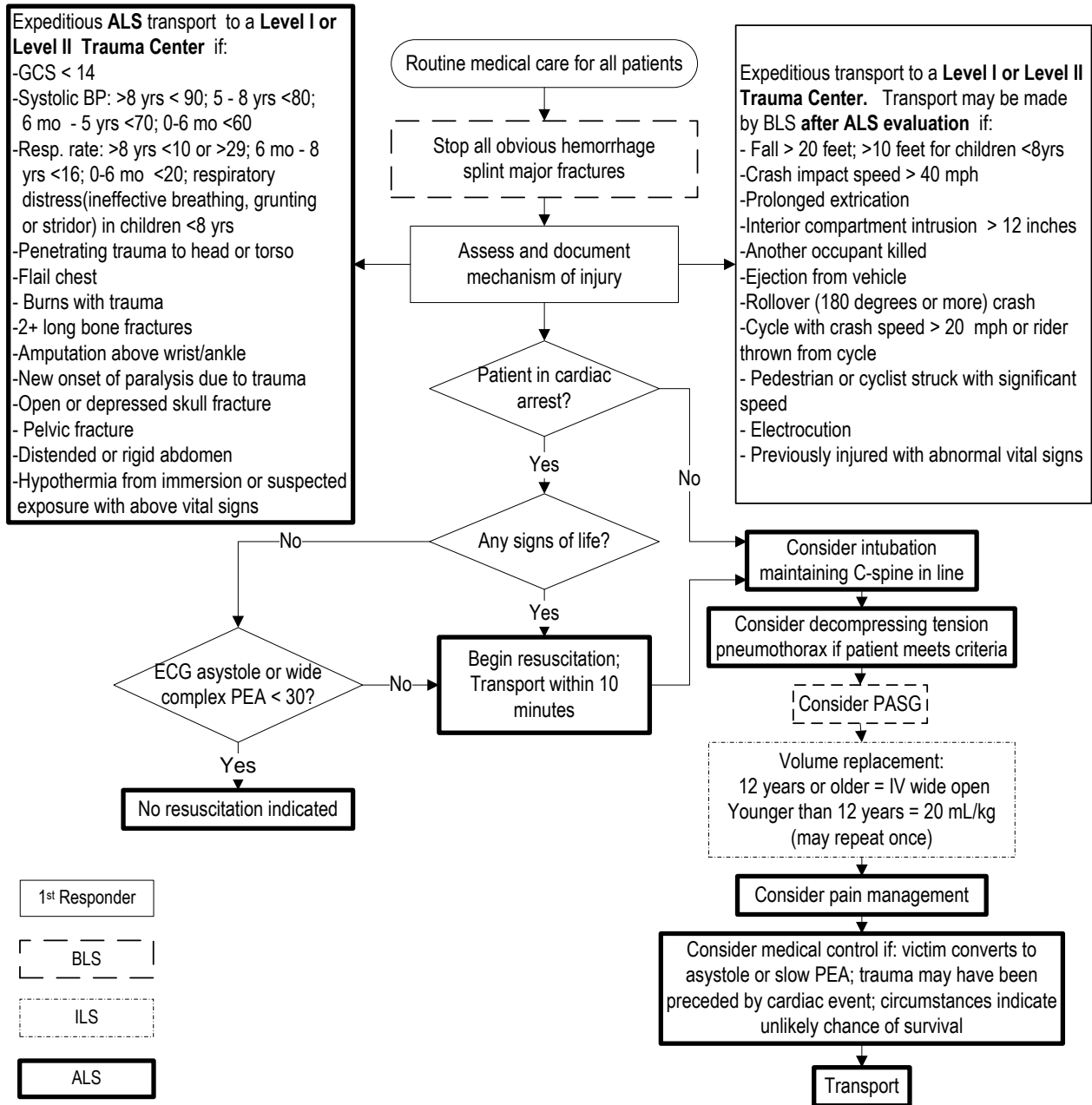


Initiated: 12/10/82
 Reviewed/Revised: 7/1/11
 Revision: 12

**MILWAUKEE COUNTY EMS
 MEDICAL PROTOCOL
 TRAUMA**

Approved by: Ronald Pirralo, MD, MHSA
 WI EMS Approval Date: 6/22/11
 Page 1 of 1



NOTES:

- In all patients with trauma-related cardiac arrest, establish the probable cause of the arrest.
- Resuscitation must be initiated on all patients with narrow (<0.12 sec) QRS complexes regardless of the rate. Patients in ventricular fibrillation or ventricular tachycardia should be defibrillated once.
- If resuscitation is not attempted based on the PFR or MED unit's interpretation of the ECG rhythm, the PFR or ALS team must complete the appropriate portion of the record.
- Apply pelvic splint or inflate pneumatic antishock garment (PASG) for patients with suspected pelvic fracture.
- Notify EMS Communications of the circumstances of the transport, ETA, and include adequate information to facilitate Trauma Team activation.
- Only reason to consider transport to the closest receiving hospital other than a trauma center is for the inability to ventilate the patient.